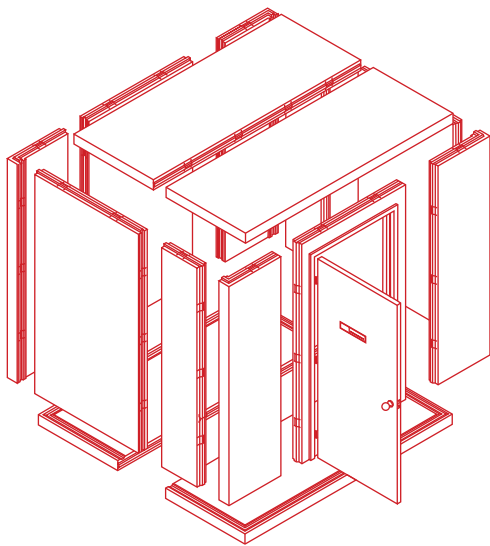




ENVIRO[®]
BUILDINGS

Install Manual



Installation Instructions

Warranty

Enviro Building
401 Delaware St. Quincy, Illinois 62301
Phone: 800.728.5454 | Fax: 217.228.2424
www.envirobuilings.com

A DIVISION OF
CRAIG INDUSTRIES

Installation Instructions



DELIVERY AND INSPECTION

Inspect all boxes for damage and verify number of boxes before signing delivery receipt. If damage or shortage is found, notate problem on the delivery receipt and contact our customer service personnel at 800-728-5454. Remove packaging and inspect panels before proceeding with installation.



LOCATE INSTALLATION PACKAGE

Locate and remove the installation package that is attached to the handle of the door. The packing list attached to the boxes will indicate which box contains the door assembly.



OPEN INSTALLATION PACKAGE AND REMOVE DRAWING

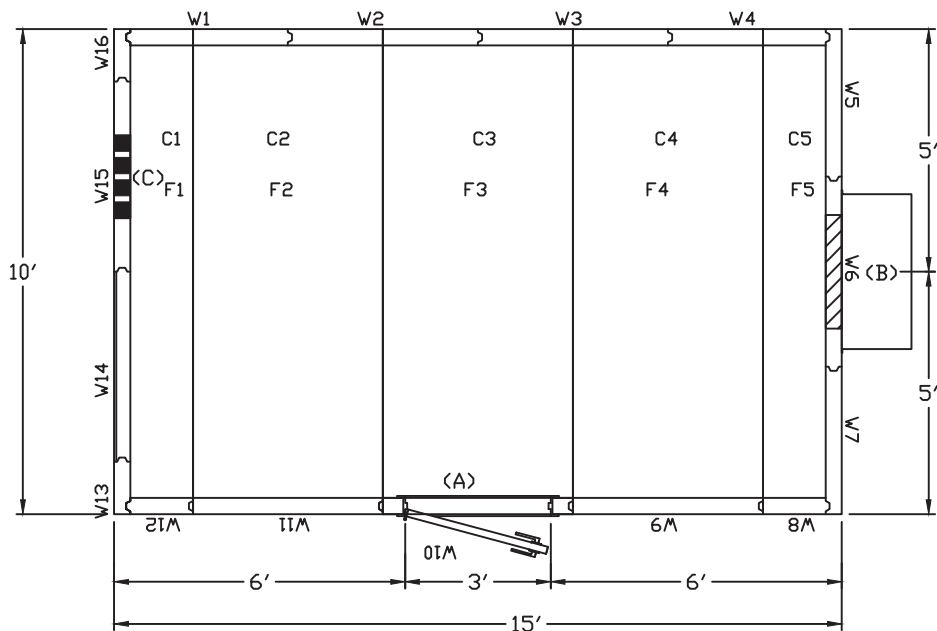
The package includes a plan view that outlines the panel layout. Each panel is numbered to match the plan: floor panels start with 'F', wall panels with 'W', and ceiling panels with 'C'. Note that the arrows on the wall panels point downwards, and cam lock holes are inside. A cam lock wrench is provided in the package for assembly.



INSTALL FLOOR PANELS

If unit is without a factory floor, skip to "Install 4" C-Channel"

After determining door location, lay out floor panels as shown on "plan view" drawing. Panels are constructed with tongue and groove edges and are fastened together by inserting the cam wrench in the cam lock hole and turning clockwise to the stop. **DO NOT OVER TIGHTEN!** Make sure edges are evenly aligned and floor is centered on prepared surface.



INSTALL WALL PANELS

Place the W1 panel and the adjacent wall panel(that makes up the corner) on the floor to form the corner andlock cam locks on the wall panels only – do not lock wall panels to floor panels until all walls are up. Install the remaining wall panels in sequence as per the labeled drawing, beginning with W2; however, the fourth corner should be the last panel installed. Note – it is important that the top edges of all wall panels are aligned evenly. Do not lock walls to floor panels yet.



INSTALL CEILING PANELS

Install ceiling panels according to layout drawing starting with C1. Make sure outside edges are flush and even. Lock into place.



INSTALL CABLE TRAY (WHERE APPLICABLE)

Cable tray must be installed prior to rain roof installation. Determine location of cable tray and mark bolt locations for suspension kits on the ceiling panel. For every 10' length of cable tray, there will be 2 pairs suspension assemblies. Drill a 1/2" hole through the ceiling panel at each mark and insert a 1/2" X 5" carriage bolt with a 5/8" flat washer from exterior of ceiling. Install 1/2" flat washer and coupling nut on the interior. Cut all thread to desired length and fasten to coupling nut. Install (1) bracket nut 2" from bottom of all thread to prevent bracket movement. Install brackets on cable tray in corresponding locations and slide assembly on to all thread. Secure with bracket washer & second nut. From the roof, apply silicone caulking around each carriage bolt.

<u>MATERIAL LIST</u>	
#	DESCRIPTION
1	CABLE RACK
2	SPLICE KIT
3	GROUNDING STRAP
4	TEE KIT
5	RACK SUPPORT KIT

NOTE: CARRIAGE BOLT COMES THROUGH THE ROOF, WITH WASHER ON THE OUTSIDE

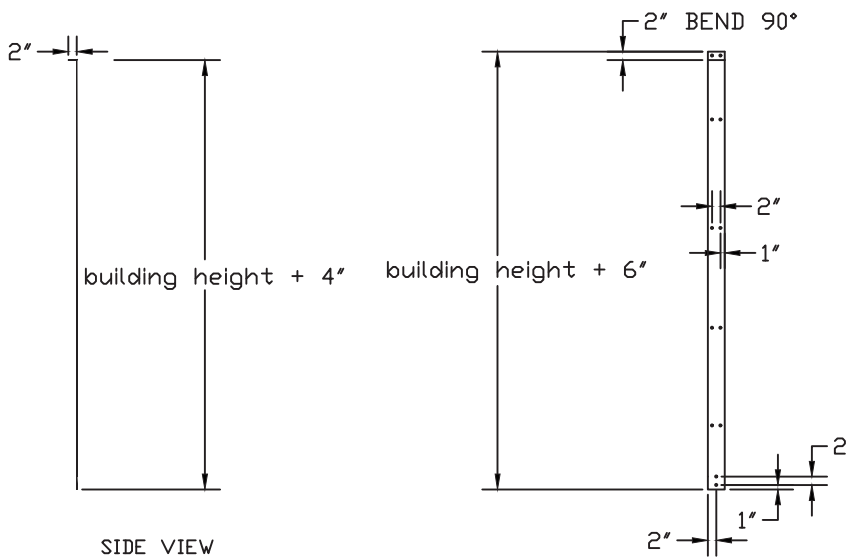
TYP. CABLE RACK MOUNTING

Installation Instructions (continued)

WIND SHEARS (IF APPLICABLE): WIND SHEAR IS A 1/4" THICK X 4" WIDE POWDERED COATED STEEL LENGTH AND STYLE VARIES BY APPLICATION

Attach the wind shears to the exterior of the building as per drawing locations. WS must be attached to shelter panels before rainroof is installed. Place wind shear against building per drawing showing placement. Once WS is placed in correct position against the shelter, pre-drill 5/16" holes at pre-punched locations along the wind shear. Attach WS to shelter with provided 3/8"x1 1/2" hex head thread cutting bolts, then attach to concrete pad in the 2 pre-drilled holes that in the 90° tab that lays flat against the concrete use the 3" concrete wedge anchors provided, or if the shelter is sitting on a steel structure attached to the steel structure using the 2 pre-drilled holes in the bottom of the WS pre-drill 2-5/16" holes in the existing steel structure and attach WS to steel structure with provided 3/8"x 1 1/2" thread cutting bolts. If building requires an ice bridge, install the rain roof first, then proceed with installation of wind shears. Wind shears will extend 3" above the building and attach directly to the ice bridge frame.

WIND SHEARS FOR FLUSH CONCRETE PAD



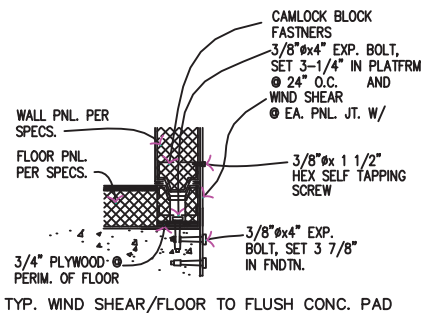
3/8" X 1 1/2"
THREAD CUTTING SCREW TYPE F
FASTENAL #32427



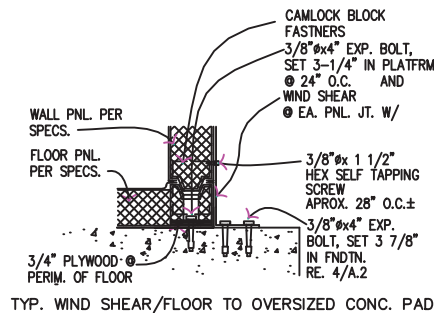
TOP 10 HOLES DRILLED 7/16"
FOR 3/8" X 1 1/2" SELF TAPPING SCREW

BOTTOM 2 HOLES DRILLED 7/16"
FOR 3/8" X 4" EXP. BOLTS

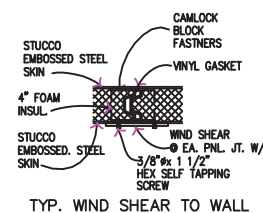
MAT'L : 4"x1/8" FLAT STOCK



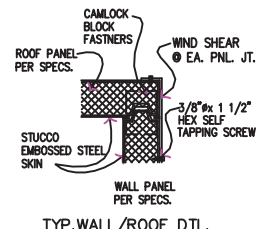
TYP. WIND SHEAR/FLOOR TO FLUSH CONC. PAD



TYP. WIND SHEAR/FLOOR TO OVERSIZED CONC. PAD



TYP. WIND SHEAR TO WALL



TYP. WALL/ROOF DTL.

INSTALL ICE BRIDGE FRAME AND GRATING (WHERE APPLICABLE)

Layout ice bridge frame sections on top of roof and connect together with bolts provided. Attach wind shear straps to Ice Bridge frame using 3/8" x 1 1/2" thread-cutting bolts provided. Install galvanized plank grating on top of frame using screws and clips provided.



INSTALL HVAC UNIT

Openings for HVAC unit have been pre-cut. Mount HVAC unit to existing openings and secure to wall with 5/16" x 1 1/2" lag bolts. Run a bead of caulk around the unit to building joint. Install 3" drip cap above air conditioner with screws provided and caulk top edge.



INSTALL FLOOR TILE

Snap Lock Floor tile

Floor tile components include: 20 1/2" X 20 1/2" square snap lock floor tile, 4" gray cove base and cove base adhesive. Starting in the center of the floor lock pieces together continue until entire floor is covered except for the outside edges, the outside edge pieces may require trimming/cutting before being locked into place. DO NOT USE ADHESIVE TO GLUE TILES DOWN! Using a putty knife, apply a thin 4" layer of cove base adhesive around bottom perimeter of wall. Press cove base over adhesive. Cut and fit as needed.



Glue down tile

Glue down floor tile components include: 12" X 12" square floor tile, floor tile adhesive, 4" gray cove base and cove base adhesive. Starting on one side of the shelter opposite the door opening spread a small layer of floor tile adhesive to the floor panels, (note not to spread out so much that you cannot start laying tile without standing in the adhesive) start in 1 corner and work your way across the section of the adhesive that has been spread, repeat these steps until entire floor has been tiled. Using a putty knife, apply a thin 4" layer of cove base adhesive around bottom perimeter of wall. Press cove base over adhesive. Cut and fit as needed.

INSTALL FASCIA TRIM (IF APPLICABLE)

7" stucco embossed fascia trim is to be installed, with the kick out edge down, around the perimeter of the base of the building, overlapping the concrete foundation 1". Fasten with two rows of #12 X 1 1/4" pre-painted self-drilling hex head screws and grommets provided at 18" on center. Run a bead of caulk along the top edge to seal out water.



INSTALL DOOR AND FRAME (OVER 36" WIDE)

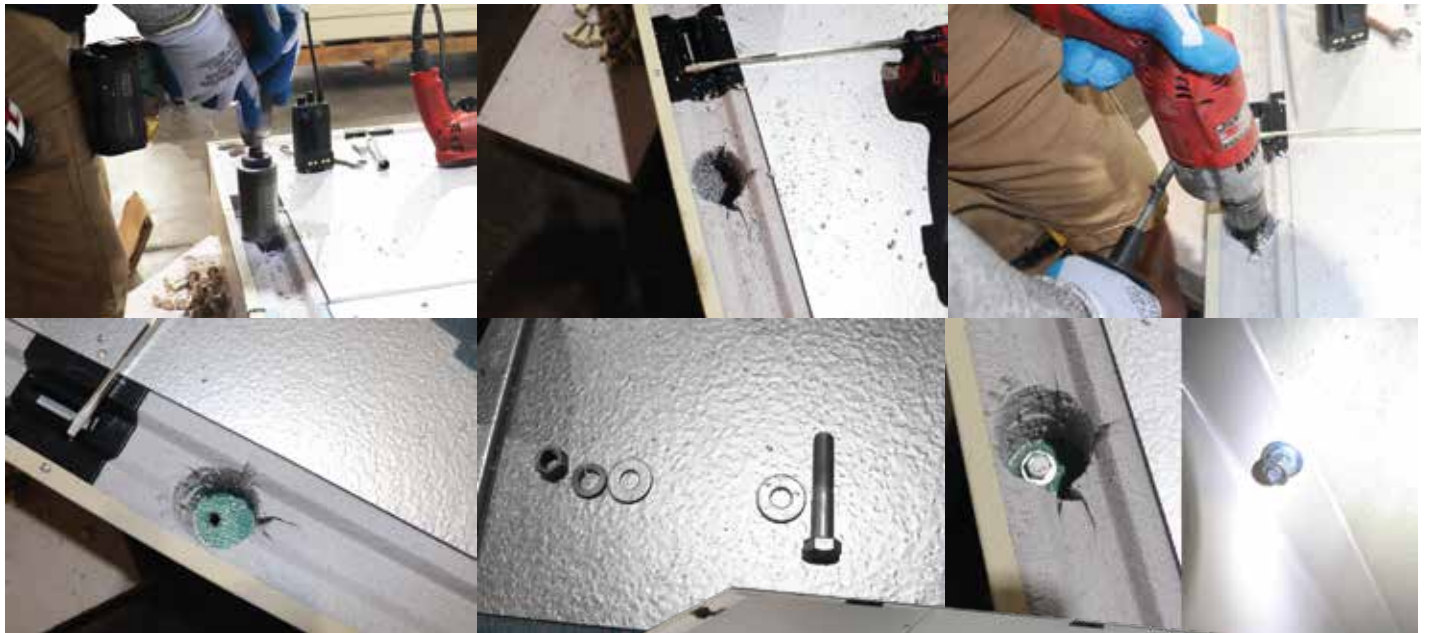
Doors under 36" are pre-installed. If your door is larger place the top horizontal portion of the frame so the frame straddles the wall section. Place each of the side vertical portions of the frame into the slots in the horizontal portion with vertical portions at an angle initially straddling the wall section. Bend the small tabs at the top of the frame by tapping with a hammer. This will pull the miters together. Make sure the frame is touching the floor. Place a square in the corners of the frame to ensure that the dimensions between the vertical portions match the measurements of the door width. Screw the frame in place by running the screws into the face of the frame in and out. Place door and hinges on the frame. Place the threshold. Make sure the gray vinyl bulb is hitting the inside face of the door. Secure into the floor with screws. Install door closer per manufacturer's instructions.



Installation Instructions (continued)

FASTEN FLOOR TO PREPARED STEEL SURFACE (IF APPLICABLE)

Starting at one corner of the floor, drill out a 2" plug of foam in the outer edge of the female route and drill a 7/16" hole down through the plywood and steel surface. Insert 3/8" x 2 1/2" hex head bolt with flat washer through the drilled hole and install lock washer and nut from the underneath side. Tighten. Repeat this procedure at 24" on center around the perimeter.



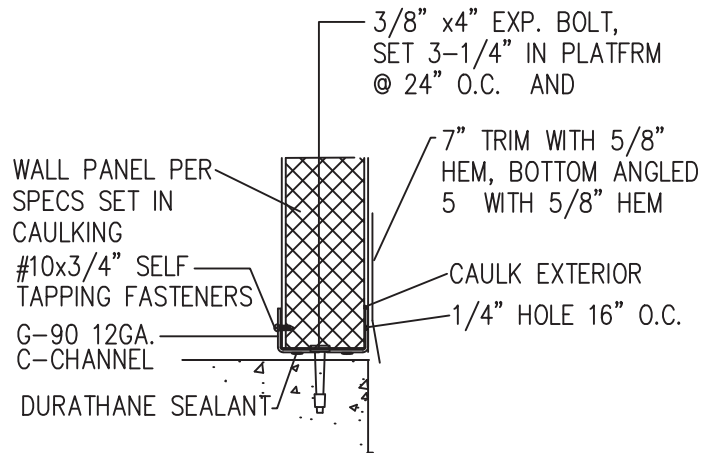
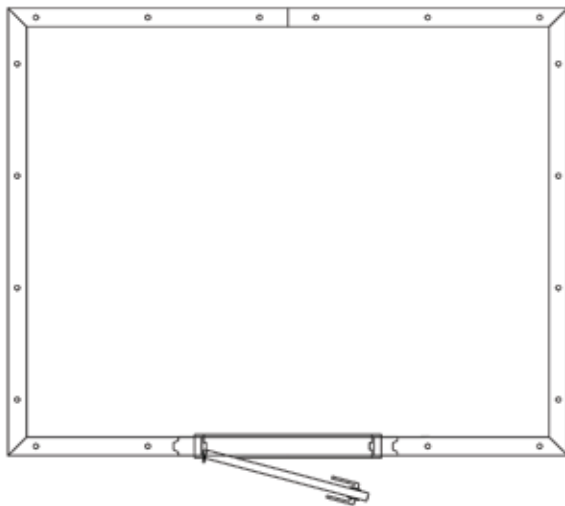
FASTEN FLOOR TO PREPARED CONCRETE SURFACE (IF APPLICABLE)

Starting at one corner of the floor, drill out a $\frac{3}{4}$ " plug of foam in the outer edge of the female route and drill a $\frac{3}{8}$ " hole with a masonry bit, down through the plywood and 4" into the concrete. Insert $\frac{3}{8}$ " x 4" expansion bolt with lock washer & nut. Tighten. Repeat this procedure at 24" on center around the perimeter.



INSTALL 4" C-CHANNEL (NON-FLOORED SHELTERS ONLY)

Layout C-channel to match size of shelter layout. Then attach to concrete by drilling $\frac{3}{8}$ " holes in the concrete at the pre-drilled hole locations in the bottom of the c-channel. Insert $\frac{3}{8}$ "x4" wedge anchors thru holes in c-channel into concrete then tighten nut. Continue this process around the perimeter of the c-channel. Once shelter has been fully erected and roof panels installed, go back, and attach the c-channel to panels using the predrilled $\frac{1}{4}$ " holes on the inside and outside of the c-channel using the #14 X 2" self-tapping Phillips head screws provided. Must be done before installing the Fascia Base trim.



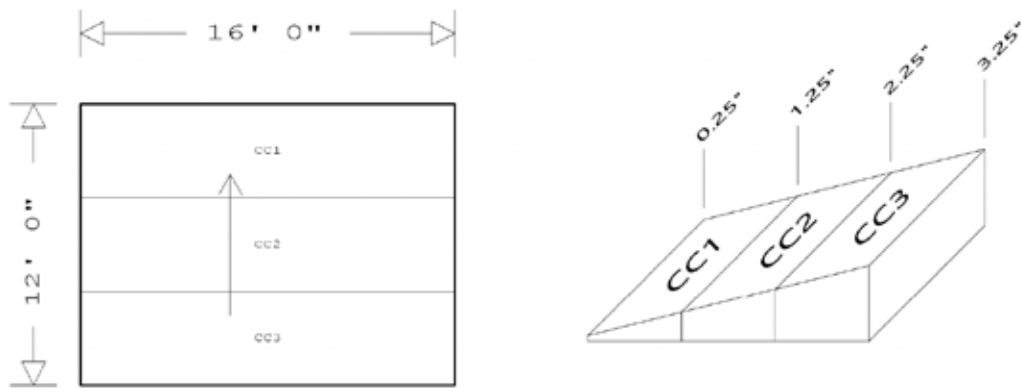
TYP. SLAB/WALL DTL.



Installation Instructions (continued)

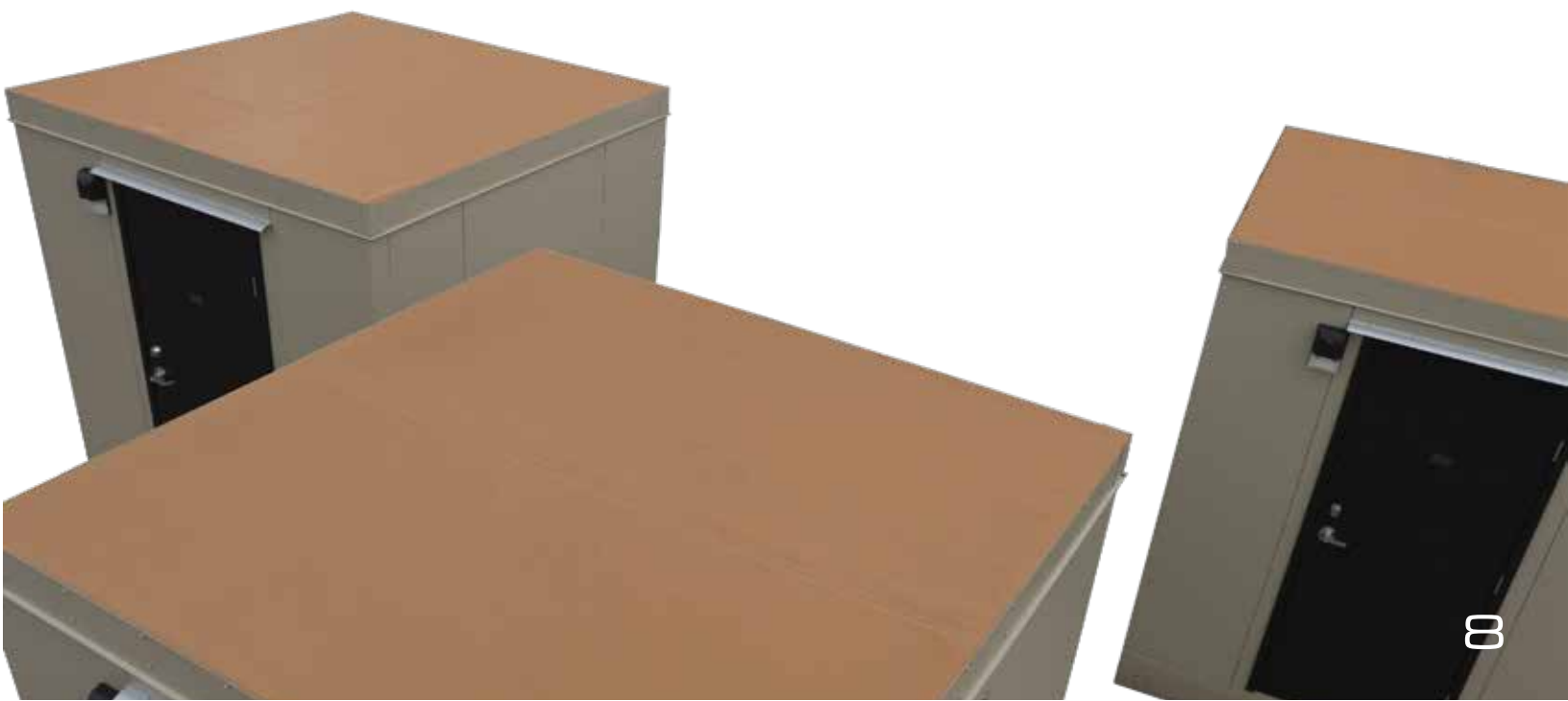
TYPICAL SLOPE FOAM INSTALLATION (WHERE APPLICABLE):

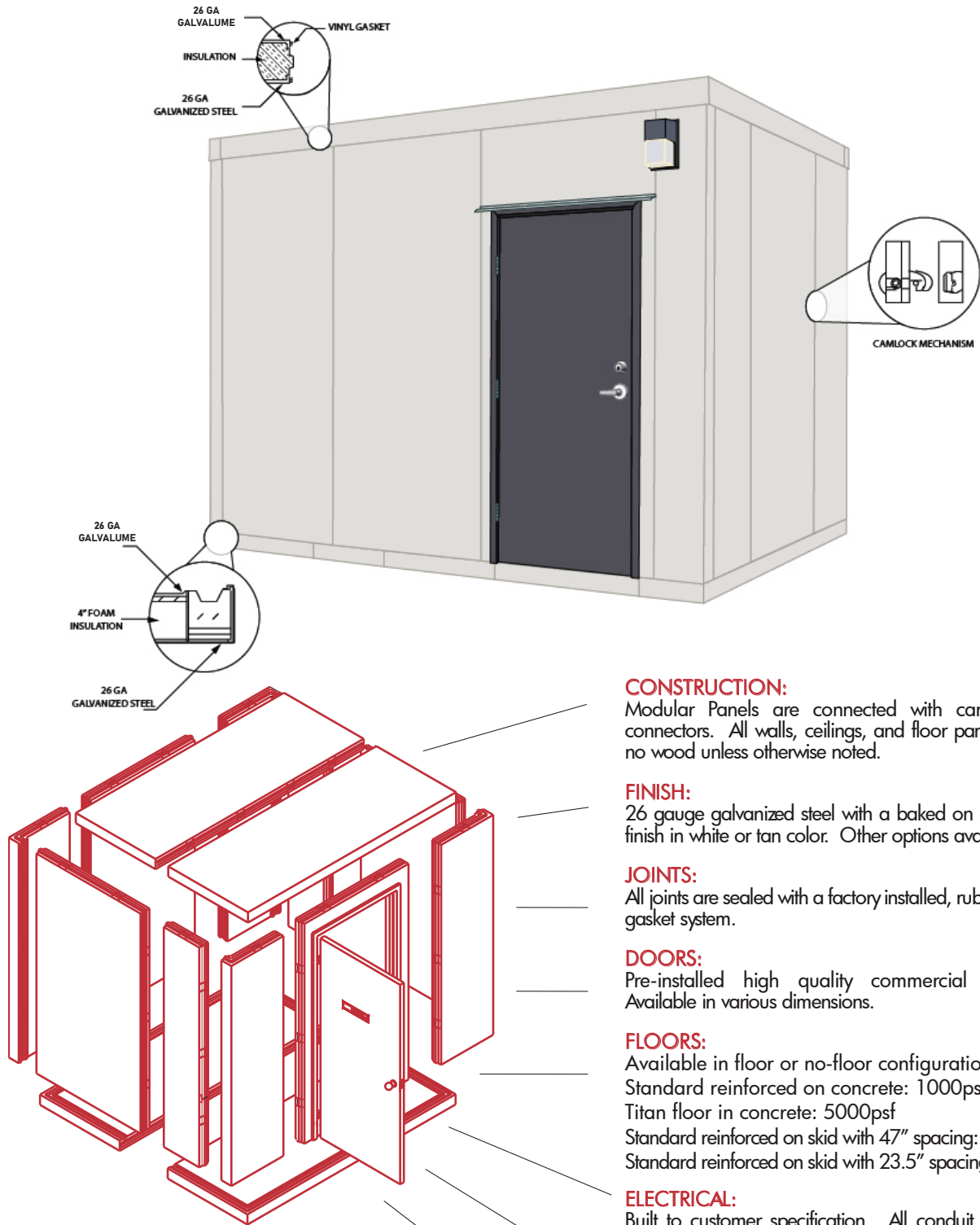
Slope foam installation for Enviro Buildings consists of the tapered foam and the vapor barrier material. The slope foam taper typically starts at $\frac{1}{4}$ " and goes up to about 4". The foam is typically marked CC1, CC2 or CC3 depending how many rows of foam are needed to cover the walk-in. Starting at a corner of the roof panel, place a row of panels down, depending on which direction the taper is made to run across the top of the walk-in. After each row is placed down, it's always best to run a strip of furnace tape across the foam panel, just to keep them temporarily in place until the rain roof membrane has been installed. After installing all the tapered foam panels, we have provided a roll of 4 mil vapor barrier, that needs to be placed over the tapered foam panels. This protects the membrane from any gasses that may escape from the foam, which will reduce the life span of the membrane. With the foam and vapor barrier now in place, the roof membrane can now be installed.



INSTALL RAIN ROOF/TERMINATION BAR (WHERE APPLICABLE)

Tools required for Installation: Metal cutters, powered drill, #2 Phillips driver, 1/4" hex head driver, razor knife, caulk gun. Roll out membrane onto roof surface. Be sure that the mounting tabs made into the rainroof are on the bottom once the rain roof is rolled out. Make sure material is square with the building with a minimum 6" overlap on all sides. Insert the round protective patch on each corner of the building to protect material from damage. Fold back membrane to expose the fastening tabs. The size of the rainroof will determine the number of tabs. If rainroof has more than 1 tab the rainroof will need to be rolled back onto itself to expose the first tab to be fastened to the roof of the shelter. Fasten tabs to the roof using 2" steel plates and #2 X 1" round head Phillips screws, 12" on center. Be sure to stretch and pull the rainroof tight before fastening tab to building, once the first tab is attached repeat steps until all tabs have been securely fastened to the roof. Once the rainroof has been securely attached to the roof install the provided termination bar. Install the smooth pre-painted 6" termination bar 1/2" below the roofline with the kick out edge on the bottom. Fasten with the #12 X 1 1/4" pre-painted self-drilling hex head screws and grommets provided, in two rows 18" on center. Install corner pieces and run a bead of caulk along the top of the termination bar.





OPTIONS:

HVAC systems, electrical packages, entry ports, equipment racks and lighting provisions upon customer request. All options can be factory installed or supplied for field install.

WARRANTY:

Limited 10 year panels.

CONSTRUCTION:

Modular Panels are connected with cam lock connectors. All walls, ceilings, and floor panels use no wood unless otherwise noted.

FINISH:

26 gauge galvanized steel with a baked on enamel finish in white or tan color. Other options available.

JOINTS:

All joints are sealed with a factory installed, rubberized gasket system.

DOORS:

Pre-installed high quality commercial doors. Available in various dimensions.

FLOORS:

Available in floor or no-floor configurations.

Standard reinforced on concrete: 1000psf

Titan floor in concrete: 5000psf

Standard reinforced on skid with 47" spacing: 250psf

Standard reinforced on skid with 23.5" spacing: 550psf

ELECTRICAL:

Built to customer specification. All conduit surface mounted.

ROOF COVERING:

Thermo-plastic membrane included. Sloped and other roofing systems available.

FLAME AND SMOKE RATING:

All panels insulated with R-18 Expanded Styrene or R-32 Extruded Styrene meeting U.L. 25 Flame Spread Rating with avg. smoke rating less than 165.

ENVIRO BUILDINGS PANEL WARRANTY INFORMATION

These Warranty Terms govern all products manufactured by Craig Industries, Inc. under the U.S. Cooler®, Enviro Buildings®, Eden Growrooms®, BrewCave® or WineKeep trademarks and product lines. Craig Industries Inc. DBA Enviro Buildings warrants to the original purchaser that the modular panels manufactured by the company are free from any defect in material or workmanship under conditions of normal use and service. The obligation of the manufacturer under this warranty shall be limited to repairing or replacing at their option FOB factory, panels of said walk-in which proves defective within ten years from the date of purchase. All hardware carries a standard one-year warranty. This warranty does not include any labor charges for replacement or repair of defective parts.

THIS WARRANTY IS IN LIEU OF ALL OTHER WARRANTIES EXPRESSED OR IMPLIED AND DOES NOT APPLY TO EQUIPMENT THAT HAS BEEN SUBJECT TO ANY ACCIDENT, ALTERATION, ABUSE, MISUSE, OR IMPROPER INSTALLATION. ENVIRO BUILDINGS® COMPANY, INC. EXPRESSLY DISCLAIMS ALL OTHER WARRANTIES EXPRESSED OR IMPLIED. THE STANDARD WARRANTY DOES NOT INCLUDE ANY LABOR CHARGES FOR THE REPLACEMENT OR REPAIR OF DEFECTIVE PARTS. IN NO EVENT SHALL CRAIG INDUSTRIES, INC. BE LIABLE FOR ANY SPECIAL, DIRECT OR INDIRECT, INCIDENTAL OR CONSEQUENTIAL DAMAGES OR FOR ANY LOST PRODUCTS, LOST PROFITS OR REVENUES OR OTHER LOSSES OR DAMAGES CAUSED BY LOST PRODUCT OR LOST PROFITS OR REVENUES, WHETHER FOR BREACH OF WARRANTY OR OTHERWISE. ENVIRO BUILDINGS PRODUCT WARRANTY DOES NOT COVER ANY PRODUCTS INSTALLED OUTSIDE OF THE CONTINENTAL UNITED STATES.

For warranty work on your Enviro Buildings® modular building, call our Customer Service Department immediately. You will then be advised of the proper procedure to follow. NO warranty work is to be performed without an authorization number, which will be provided by the Customer Service Manager. Craig Industries assumes no responsibility for work performed without an authorization number.

CUSTOMER SERVICE CONTACT INFORMATION:

Enviro Buildings
401 Delaware St.
Quincy, IL 62301

Toll Free: 800.728.5454
Phone: 217.222.5453
Fax: 217.228.2424

Email: customerservice@envirobuildings.com
Company Website: www.envirobuildings.com

Enviro Building is a Registered Trademark and Product of Craig Industries, Inc.

For a comprehensive visual guide on how to install your Enviro Building, please scan the QR code below. This QR code will direct you to a detailed installation video that walks you through the process step-by-step. Watching this video can greatly enhance your understanding and efficiency, ensuring a smooth and successful setup of your new building.



www.envirobuildings.com/installation-instructions/

For step by step instructions on add-ons, please review detailed instructions in this booklet.



Enviro Buildings
401 Delaware St. Quincy, Illinois 62301
Phone: 800.728.5454 | Fax: 217.228.2424
www.envirobuildings.com

