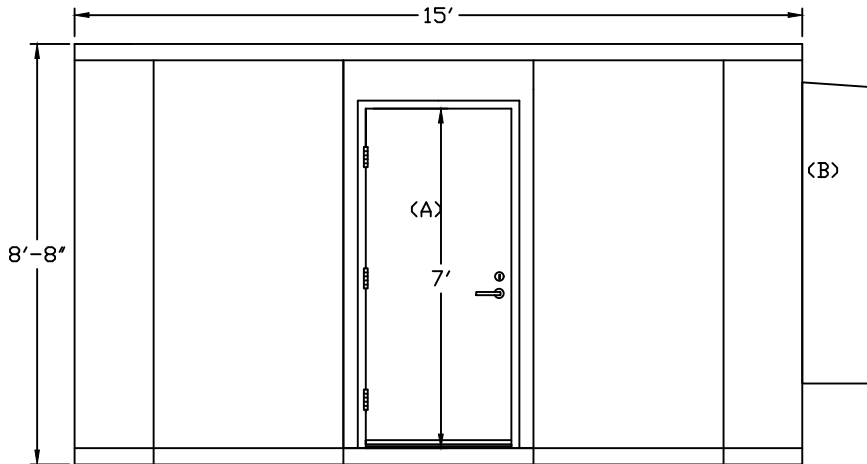
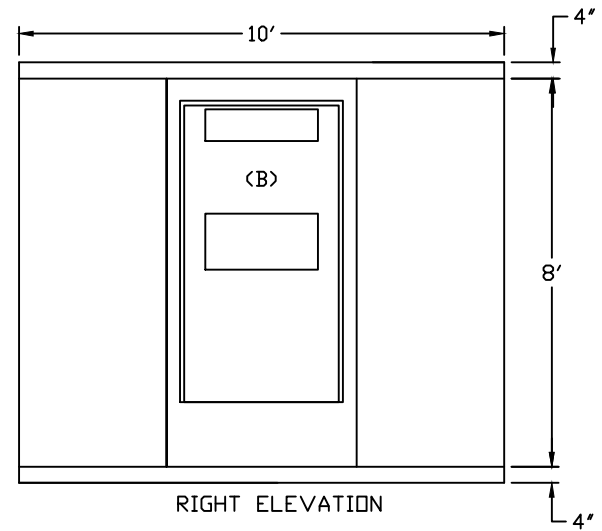


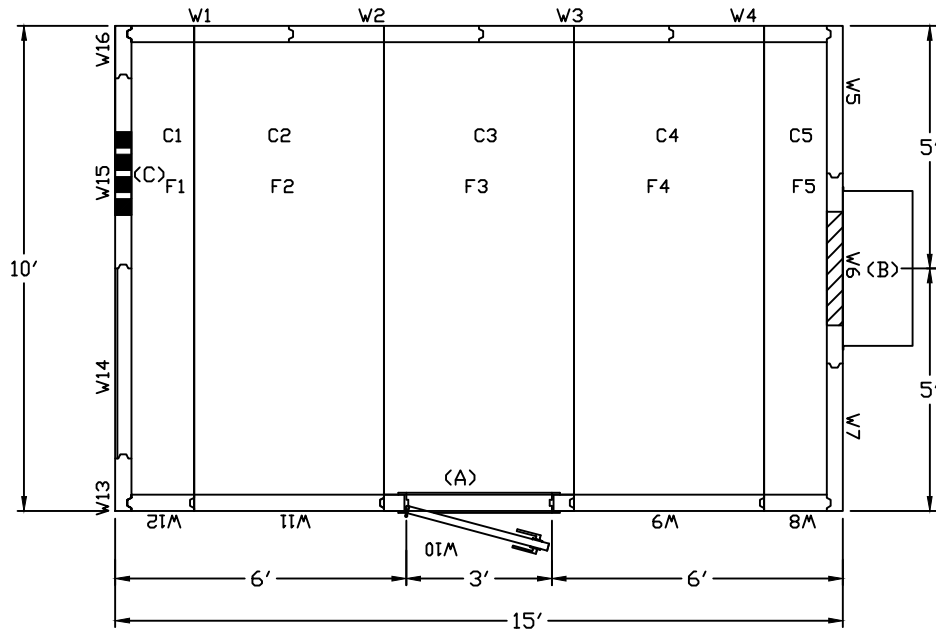
LEFT ELEVATION



FRONT ELEVATION



RIGHT ELEVATION



(A) 3'0" x 7'0" Door and frame, 24 gauge. Includes: threshold, weather seal, stainless steel hinge. Color: bronze, Plyco lever/lever lockset, Door deadbolt, with DI key way

(B) Marvair Conditioner-11EER-3 ton cooling-5KW heat-230/208/1/60 electrics - R410A - supply & return grills- high & low pressure control- compressor anti-cycle delay- low ambient control- alarm relay-

(C) 4" Waveguide entry port - 8 hole (2 x 4) - Tan

NOTE: W2,W3,W4,W6,W9,W10,W11,W14,&W15 ARE INTERCHANGEABLE

NOTE: W14 HAS 1/2" EXTERIOR PLYWOOD REINFORCEMENT

BUILDING SIZE: 15'-0" X 10'-0" X 8'-8"



ENVIRO BUILDINGS

401 DELAWARE ST.
QUINCY, IL 62301
TEL 217-222-5453
TEL 800-728-5454
FAX 217-228-2424

CUSTOMER

Enviro Buildings

SITE:

P.O.#

JOB# 50730

DWG.REF. 597565-2

DATE: 4/11/2023

SCALE:

APV.

DRAWN

SR